



产品名称

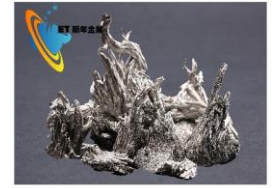
金属钕

批次号

产品形态:

CAS.No

7440-60-0



金属钕 CAS NO.7440-60-0

Element	Concentration [ppm wt]	Element	Concentration [ppm wt]
Li	< 0.01	Rh	< 0.5
Be	< 5	Pd	< 0.5
B	< 0.005	Ag	< 0.5
C	< 100	Cd	< 0.5
N	-	In	< 0.5
O	-	Sn	< 0.5
F	< 0.01	Sb	< 0.5
Na	< 50	Te	< 0.5
Mg	< 0.01	I	< 0.5
Al	< 50	Cs	< 0.5
Si	< 50	Ba	< 0.5
P	< 0.01	La	< 50
S	< 50	Ce	< 50
Cl	-	Pr	< 50
K	< 0.05	Nd	< 50
Ca	< 50	Sm	< 50
Sc	< 0.05	Eu	< 50
Ti	< 0.05	Gd	< 50
V	< 0.05	Tb	< 50
Cr	< 0.05	Dy	< 50
Mn	< 20	Ho	99.9%
Fe	~0.05Wt%	Er	< 50
Co	< 0.5	Tm	< 50
Ni	< 20	Yb	< 50
Cu	< 20	Lu	< 50
Zn	< 50	Hf	< 0.1
Ga	< 0.5	Ta	< 0.1
Ge	< 0.5	W	< 0.05
As	< 0.5	Re	< 0.05
Se	< 0.1	Os	< 0.1
Br	< 0.5	Ir	< 0.05
Rb	< 0.1	Pt	< 0.5
Sr	< 0.5	Au	< 0.1
Y	< 50	Hg	< 0.5
Zr	< 0.5	Tl	< 0.5
Nb	< 0.5	Pb	< 0.01
Mo	< 0.5	Bi	< 0.01
Ru	< 0.5	Th	< 0.01



Amy Liu