



产品名称

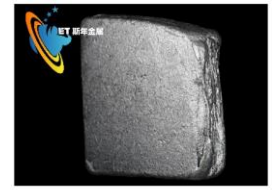
金属钽

批次号

产品形态:

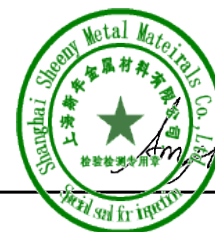
CAS.No

7440-25-7



金属钽 CAS NO. 7440-25-7

Element	Concentration [ppm wt]	Element	Concentration [ppm wt]
Li	-	Rh	< 0.5
Be	-	Pd	< 0.5
B	-	Ag	< 0.5
C	≤50	Cd	< 0.5
N	≤50	In	< 0.5
O	≤50	Sn	< 5
F	-	Sb	< 5
Na	-	Te	< 0.5
Mg	< 5	I	< 0.5
Al	< 5	Cs	-
Si	≤50	Ba	< 0.5
P	< 0.5	La	< 0.5
S	-	Ce	< 0.5
Cl	-	Pr	< 0.5
K	< 0.5	Nd	< 0.5
Ca	< 20	Sm	< 0.5
Sc	< 0.5	Eu	< 0.5
Ti	< 10	Gd	< 0.5
V	< 0.5	Tb	< 0.5
Cr	< 10	Dy	< 0.5
Mn	< 10	Ho	< 0.5
Fe	< 20	Er	< 0.5
Co	< 10	Tm	< 0.5
Ni	< 10	Yb	< 0.5
Cu	< 5	Lu	< 0.5
Zn	< 5	Hf	≈20
Ga	< 5	Ta	99.99%
Ge	< 0.5	W	< 100
As	-	Re	< 0.05
Se	-	Os	< 0.5
Br	< 0.5	Ir	< 0.5
Rb	< 0.5	Pt	< 0.5
Sr	< 0.5	Au	< 0.5
Y	< 0.5	Hg	< 0.5
Zr	≈20	Tl	< 0.5
Nb	< 10	Pb	< 10
Mo	< 10	Bi	< 0.5
Ru	< 0.5	Th	< 0.5



Amy Liu